

Alcatel-Lucent OmniVista 2500 & 2700

Delivering the Best Manageability
for the Enterprise





Network management today

Network management was supposed to be simpler now that many of the older networking technologies have become obsolete. Instead, it has become more complex from needing to protect against the ever changing security threats and the implementation of new services and technologies such as wireless access. Network manageability has also increased in importance as IT managers are facing a proliferation of converged, mission critical applications with unpredictable and rapidly growing network traffic. Network management applications must address security, network integrity, mobility and convergence infrastructure issues. It must also continue to support existing services with improved availability and service level agreements (SLAs).

Add to this the fact that companies are experiencing budget cuts and staff reductions forcing them to do more with less. Clearly, network management plays a critical role in addressing these issues. Enterprise networks need a network management system (NMS) that reduces overall operational costs allowing IT resources and expertise to be deployed in more strategic locations.

OmniVista 2500 & 2700

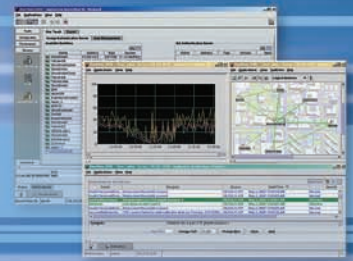
Alcatel-Lucent OmniVista 2500 and 2700 provide a comprehensive set of network management applications and tools that simplify the management of Alcatel-Lucent and third party networking devices. OmniVista solutions allow managers to monitor network activity, configure and troubleshoot each device, as well as manage an entire network from a single platform.

OmniVista has a true client / server architecture that allows multiple users to access its services simultaneously either through a Java-based client or through Web browser application. It delivers network level management while providing access to various element managers. OmniVista offers the following:

- Scalable client/server/database architecture for large infrastructure
- Centralized, cohesive management with a common intuitive look and feel
- Network-wide visibility with topology view
- Contextual integration with element manager
- Device group manager for logical association and operation efficiency
- Scheduler available for automation of repetitive operations
- Alarms monitoring with smart responders
- Northbound interface for monitoring automation
- Device configuration backup/restore and software version management
- VLAN provisioning and troubleshooting
- Policy-based QoS for voice and data performance optimization
- Network quarantine to contain potential threats
- Policy-based access control list for network resource access

*“Alcatel-Lucent’s
OmniVista network
management
simplifies network
operations by
improving network
availability and
security, while
reducing costs.”*

Alcatel-Lucent OmniVista 2500 & 2700



Plus, OmniVista is easy to learn, saving network managers' time while improving service levels. OmniVista also ensures a safe and secure infrastructure through extensive network access control, customizable security policies based on business needs and services, and the elimination of threats from misbehaving devices by quarantine and isolation.

Alcatel-Lucent overall manageability

Alcatel-Lucent addresses NMS problems and concerns by designing switches that provide management through easy to use interfaces with a common look and feel. Users get to select an interface they're most comfortable with including command line interfaces (CLI), WebView, or OmniVista.

CLI – command line interface

Even with today's sophisticated graphical user interfaces (GUI), engineers frequently prefer to use command line interfaces (CLI) for initial configuration of switches / routers. It reduces configuration time as they are able to gather a wide range of configuration information from one set of commands. Plus, ascii-based configuration files can be copied and pasted from one switch to another. Alcatel-Lucent simplified it further by ensuring that the commands are the same for all Alcatel-Lucent OmniSwitch platforms and have 100% of the functionality of WebView.

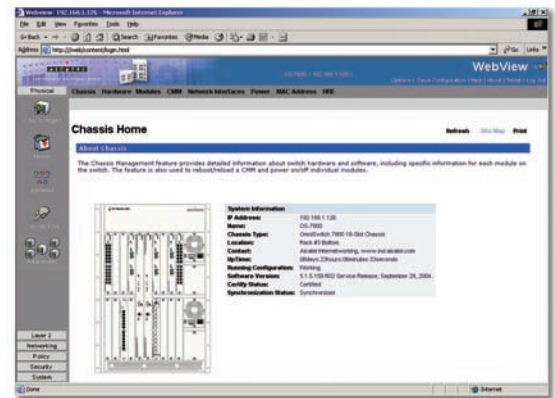
WebView – management from the Web

Alcatel-Lucent WebView is a web-based element manager that has the equivalent functionality of a CLI with the common look and feel of the OmniVista 2500 and OmniVista 4760 NMS platforms. OmniVista 4760 supports the OmniPCX family of PBXs and IP telephony. WebView with a device-centric view was designed to be intuitive, minimizing the time required to learn a feature and configure it.

OmniVista

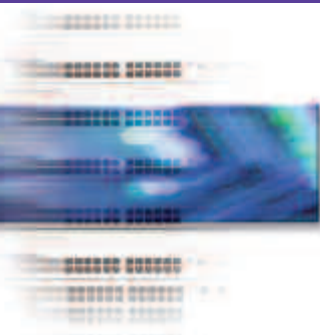
OmniVista 2500 and 2700 are a comprehensive set of network management applications and tools that simplify the management of Alcatel-Lucent networking and third-party devices through a user-friendly, graphical user interface (GUI). OmniVista provides a centralized, global view of the network. It allows network managers to perform bulk operations saving time and preventing errors that can occur from repetitive tasks. The manager doesn't have to touch every switch since OmniVista takes care of it.

OmniVista increases productivity because of its simplicity and scalability. Its graphical user interface has a minimal learning curve because it has the same look and feel across all applets, it is inclusive, and offers OneTouch point-and-click technology.



WebView, the Alcatel-Lucent LAN switch element manager, complements OmniVista network management tools

“WebView is simply the network industry's best element manager web interface.”



OmniVista, an SNMP-based (v1, v2c, and v3) platform, allows managers to monitor network activity, configure and troubleshoot each device, as well as manage an entire network from a single platform. OmniVista offers bulk, automated, and standardized operations across the entire network.

OmniVista Provides

Centralized management: simplifies management and improves control by having a single, centralized repository of network administrators and their credentials.

Unified management and network visibility: provides a common graphical interface and network management infrastructure for performing management functions, integrating applications, and unifying element management across multiple devices.

Network-wide visibility: gives managers an extensive view and reporting of network activity with functions such as discovery, physical, and logical topology maps including spanning tree domains, centralized event management, graphs, and statistical information.

Web browser interface for OmniVista client: allowing anytime, anywhere access to critical data for monitoring and troubleshooting operations for optimal network availability.

Element management: integration provides direct access to each device through its native element manager and allows all networking devices to be configured from a centralized location.

Policy-based QoS: a simplified, policy-based QoS management that can be used across multiple switches.

Secure device access: centralizes control of switch administration access rights. Offers OneTouch setup of user login, password, and partitioned management (user credentials and access rights).

Network quarantine: eliminates threats and security alerts from misbehaving devices by providing automation for quarantine and isolation.

Policy-based network access control: Security is enhanced using network access control lists (ACL) as well as OneTouch and Expert modes for creating, administering, and updating ACLs from a centralized platform.

Scalable architecture: provides single-user and multi-user versions with an extensible architecture plus applications that allow the OmniVista NMS environment to be tailored to the user's network and budget needs

OmniVista Network Management System

OmniVista consists of:

- **OmniVista 2500, which is the core application for network-wide management configuration and monitoring tasks**
- **OmniVista 2700, which consists of supplemental applications extending configuration for complex settings such as security operations, performances and automation of monitoring.**

Alcatel-Lucent OmniVista 2500 & 2700



OmniVista 2500 Network Management Services

The OmniVista 2500 application is the foundation for managing networks composed of Alcatel-Lucent and other network devices. The OmniVista 2500 family gives administrators a unified view of the network as well as the necessary functions and services required to support next generation devices and applications. It features centralized management, bulk operations, simplicity, and scalability.

It adheres to the essential network management functions of the FCAPS model (fault, configuration, accounting, performance, security) including:

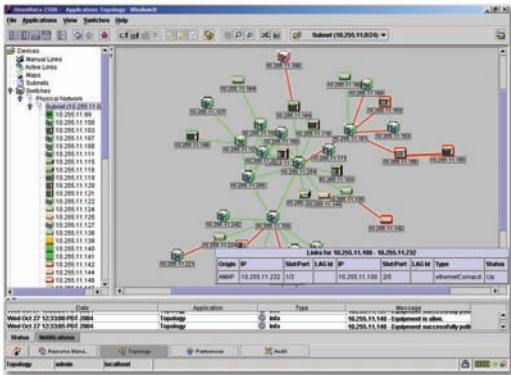
- **Discovery of all Alcatel-Lucent and third-party SNMP network devices**
- **Topology maps with interconnection links and performance information**
- **Network-wide display of spanning tree domains**
- **Multi-level user administration and security credential**
- **Events and alarms management, including action on events, which are based on severity and action profiles**
- **Statistics and health monitoring with alarms and thresholds**
- **Inventory reports and switch auditing features**
- **Automatic creation of VLANs across multiple switches**
- **Locator for simplifying troubleshooting, by locating AOS and third-party devices based on port settings, location, IP/MAC addresses and DNS.**
- **Automated and scheduled backup and restoration of device configuration**
- **Automated download of new switch software image files**
- **OmniVista Server Backup – an application for constant replication of the network management software environment**

By providing centralized operations, the infrastructure is optimized and deployment is simplified. Network device discovery and topology maps provide both physical and logical views of the network. Users are able to automate operations such as CLI scripting, create VLANs across multiple devices, and provide third party device support.

Centralized operations also optimizes troubleshooting since it is easier to monitor the health of the network using a combination of alarm information, the locator service for pinpointing user location, and the trap responder for taking quick, automated action when there is an event. Health and statistic information is also readily available.

Discovery

OmniVista 2500 provides the ability to control the discovery of Alcatel-Lucent LAN switches, OmniAccess wireless devices and third-party devices the IT staff member wishes to manage. Through the topology applications, all supported devices are discovered, device lists can be sorted by IP address, type, etc., and there is a dynamic indicator showing the status of each device.



Discovery and Topology for device mapping and inter-connection links

Topology and Spanning Tree Map

A topology map built within OmniVista 2500 can help the user determine where problems are and rapidly fix them. Using the topology map, a user can quickly determine network issues based on the dynamic, color-coded status feature so that a user can pinpoint current and impending problems at a glance. All Alcatel-Lucent devices and third-party devices are supported. Topology also allows the network manager to launch specific applications and as http-based management for the OmniAccess wireless devices and any other third-party element management applications.

Network-wide spanning tree domains are visualized as well on the topology application allowing the network administrator to quickly identify spanning tree instances, VLAN associations, and ports status.

VLAN Manager

The OmniVista 2500 VLAN Manager allows users to create and manage VLANs across multiple switches. Through the manager, it's possible to:

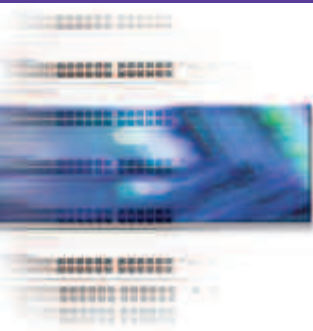
- Define a VLAN template to speed up new device introductions such as: copy existing VLAN definition to a new device, copy devices to a new VLAN, and apply VLAN rules to a user defined group of switches
- Assign ports to VLANs
- Define IP/IPX routing rules, and assign routing interfaces
- Define mobility rules

The VLAN manager also supports 802.1Q as well as spanning tree, and it's integrated with the topology database, making all of these functions possible. Combined with the VLAN browser capabilities, OmniVista can reduce planning and the troubleshooting associated with complex vln setup.

Resource Manager

The OmniVista 2500 Resource Manager provides control of switch software and switch configuration for automated backup / restoration of configurations and software image files, and allows bulk download of software images. The Resource Manager allows network administrators to shift from a device centric to a network centric view, maximizing the IT staffs' productivity. This also decreases the number of administrators required to maintain the network and increases the number of remote locations that can function without IT resources. Incremental backup support helps network administrators to maintain up to date complex configurations. Lastly, equipment standardization enables automation of many tasks including switch reboot.

Resource Manager saves time and IT resources, it reduces human errors and remediation cost, simplifies software by standardizing across networks, and optimizes the network infrastructure with reduced mean time to recovery (MTTR).



elements enabling a quicker containment of problems. It also enhances an administrator's access control to the network providing a first line of defense against security hazards. It supports a "right-click" menu for direct interaction with other OmniVista applications such as the Quarantine Manager and VLAN Manager to expedite trouble shooting and problem resolution.

Lastly, Locator is able to discover non-AOS devices from third-party vendors and offers an option to find the closest AOS switch to the third-party device and draw a link on the topology map.

Performance - Health & Statistics

OmniVista 2500 allows users to get performance information from multiple devices at once enabling users to correlate information and analyze network-wide activities. Early detection of problems provides opportunities for pre-emptive actions to be taken. OmniVista allows the user to monitor the network's health through the use of thresholds on specific parameters providing early awareness and constant visibility of the network's health. When the threshold is crossed, a trap is sent to the Notifications application to warn the admin of the problem.

Statistics

OmniVista 2500 constantly monitors the network, using multiple profiles and collected statistics from across multiple devices and modules at a time, which are viewable on a common graph or information table. These profiles are from parallel critical links to the backbone, servers and uplinks that show when the events happened. With constant monitoring of CPU use, OmniVista is able to detect critical events such as worms and other security threats. Statistics are available on Alcatel-Lucent Operating System (AOS), and any third-party device compliant with RFC 1493.

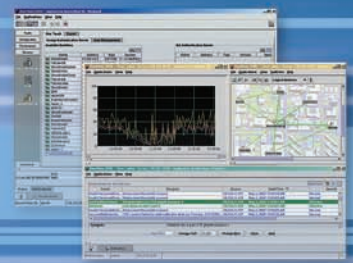
The statistics application provides a holistic view of the network's performance by understanding the behavior and pattern of the devices and users. This application is the "eyes and ears" of the network, providing the network administrator constant visibility for an instant snapshot and early awareness of any issues in the network. This early detection of potential problems leads to pre-emptive actions and reaction helping ensure high network performance levels.

OmniVista 2500 Summary

The centralized structure of OmniVista reduces the administrative burden on the IT staff when managing complex operations for multiple switches across the network. The same approach is used in the OmniVista 2700 services to manage complex settings such as data, voice, and security.

With PolicyView, network performance optimization for voice and data is made simpler. The centralized approach for secure device access and network access policy management is effortless with SecureView family series as well with the Quarantine Manager for containment management.

Alcatel-Lucent OmniVista 2500 & 2700



OmniVista 2700 supplemental services

The OmniVista 2700 supplemental services are optional software applications that provide flexibility and automation. They include:

- OmniVista 2730 – PolicyView
- OmniVista 2750 – SecureView Switch Access
- OmniVista 2760 – SecureView ACL
- OmniVista 2770 – Quarantine Manager
- OmniVista 2790 - Web Services

These applications can be added to the OmniVista environment as desired to extend the capabilities of OmniVista NMS.

OmniVista 2730 PolicyView with OneTouch QoS: simplifies the complex task of configuring QoS and enables enhanced policy-based management across multiple devices through OneTouch simplicity. The parameters are set once and distributed to the devices. This reduces the number of interfaces needed for configuring QoS for VoIP and time critical data operations.

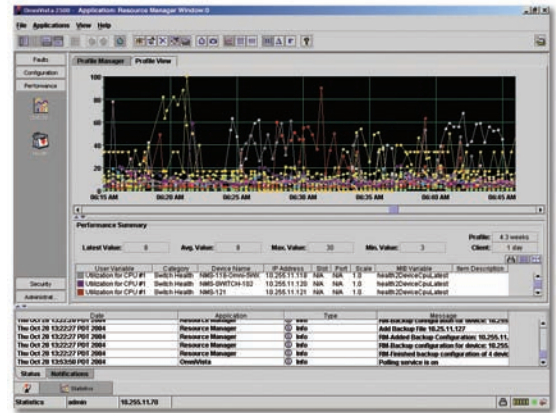
The three modes of operation are:

- OneTouch for voice, which simplifies quality of service (QoS) configurations for voice over Internet Protocol (VoIP) networking
- OneTouch for data, which allows selected servers to receive high priority traffic for mission critical applications
- Expert Mode, which provides policy validation of conditions, classifications, actions, and attributes as well as complete QoS control

OmniVista 2730's policy rule validation element checks arguments across a features and conditions matrix of Alcatel-Lucent operating system releases and against conflicting condition attributes and then flags inconsistencies. OmniVista 2730 simplifies all policy-based network-wide operations with its OneTouch effort.

OmniVista 2750 SecureView Switch Access: centralizes control of switch administration access rights and policies with OneTouch manageability. In essence, the OmniVista 2750 provides centralized control over and knowledge of who, what, how, and when users and devices are allowed into the network and minimizes human errors through automation. It offers management for simplified setup of a centralized repository (such as an LDAP directory), users, passwords, access rights, etc., reducing password management complexity.

OmniVista 2750 is part of Alcatel-Lucent's overall security strategy called CrystalSec, which is Alcatel-Lucent's security framework and architecture. Security is provided between each network layer allowing organizations to create multiple layers of defense around important assets.



Statistics application is for observing traffic patterns and early signs of changes



OmniVista 2760 SecureView ACL: is a component of Alcatel-Lucent's CrystalSec security framework that simplifies and automates the complex task of configuring network security policies by using access control lists (ACLs). Once a policy is defined, OmniVista 2760 allows the administrator to apply it to every device, all at once.

By deploying this optional application, an IT department is able to increase their productivity by eliminating the repetitive tasks of network management and by preventing security breaches and inadequate network access policies. This limited need to touch the network saves bandwidth that can be put towards more appropriate usage support the company's business. OmniVista 2760 SecureView ACL provides the network better security and the administrator total control over vital resources and their accessibility.

Access control lists are created centrally, administrated through a common central repository, and updated for traffic security and network services. OmniVista 2760 provides:

- **OneTouch Wizard, with its single page setup, simplifies network configuration and creation of network model, leveraging the network groups capability.**
- **An advanced, Expert mode for creating and modifying complex ACLs. This mode enables modifications such as device assignment, defining policy validity period, supports various Traffic conditions such as L2/L3 destination /source address, L4 conditions, VLAN IDs, subnets, network groups and applications.**

"The Quarantine Manager provides us a deeper level of security protection from intrusion threats."

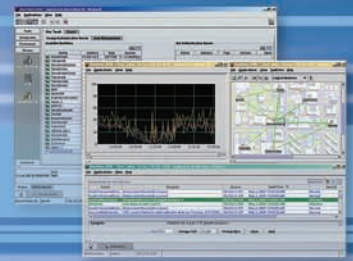
OmniVista 2770 Quarantine Manager: The Quarantine Manager combines network management and network security into one application that can be used to manage and secure a wired/wireless infrastructure. The Quarantine Manager protects the network from attacks at the network and application level by isolating the misbehaving user and providing a means for remediation.

Rules and decisions can be pre-configured using OneTouch automation for handling a security event once it is detected. Detection and notification of a security breach are initiated from IDS/IPS external devices. The notification (trap) can also be sent by Alcatel-Lucent AOS devices when under denial of service attack. These alerts are handled either through the pre-configured quarantine decisions (rules) or manually through the expert mode.

The network administrator has complete control over the quarantine operations through a user interface that provides status and override capabilities as well as the ability to segment the network for selective containment domains. There is also a candidate list window for screening potential intruders before isolating and banning them and a window where intruders may be automatically banned or identified as never ban. There is a release window for threats that have been assessed and dismissed or because the device now conforms.

Containment is possible by several methods including quarantine VLAN, by shutting down ports, by blacklisting misbehaving wireless end-users, and through containment based on network access policies (access control lists).

Alcatel-Lucent OmniVista 2500 & 2700



The quarantine VLAN method consists of the network administrator isolating the offending intruders by pushing them into a dedicated quarantine VLAN based on the intruder's MAC-address. This method can be used with all AOS-based devices with group mobility enabled.

The Quarantine Manager uses intruder containment by port shutdown when any third-party MIB-II compliant network device is misbehaving. The port is shut down to prevent further access and can be restored through the Quarantine Manager as well.

OmniAccess wireless LAN end-users who show signs of bad behavior and are detected by IDS/IPS are blacklisted to prevent access through any other access points.

The last containment method is the use of network access policies (ACL), which is accomplished through OmniVista 2760 SecureView ACL. The identified intruder's MAC-address is pushed into a centrally created ACL.

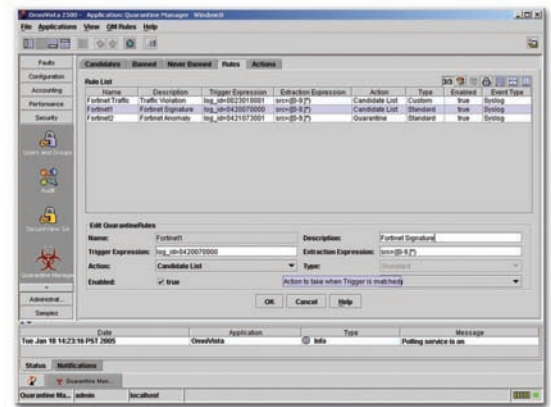
The Quarantine Manager has extensive quarantine history log files and provides MAC / IP tracing associations for troubleshooting and intrusion control. The Quarantine Manager also offers external notification capabilities for IT shops and helpdesk ticket practices.

In summary, Quarantine Manager extends Alcatel-Lucent NMS benefits such as centralization and automation by converging network management and network security under a unique application.

OmniVista 2790 Web Services: The OmniVista 2790 Web Services module provides a northbound interface for easy integration with diverse network management applications. The OV2790 optional application is based on Web Services technology, relying on Extensible Markup Language (XML) and scripting languages (Java, PHP, Perl), for easy integration with other software environments. XML-based Web Services provide application interoperability. XML provides a flexible encoding mechanism that is human readable and is able to support programmatic operations. OmniVista Web Services enables independent software vendor (ISV) partners, the IT Departments, and system integrators to use widely available, open source software development tools to integrate OmniVista 2500 and 2700 into their application and network management environment.

OmniVista 2790 offers total management access using the OmniVista GUI for the functionalities supported such as discovery, topology, notification, and locator operations. It's ideal for automating frequent monitoring tasks such as IT dashboard, allowing network administrators to quickly gauge effects of interrelated events by converging critical metrics from multiple sources.

The OmniVista 2790 Web Services interfaces can be combined with Alcatel-Lucent 5620 Service Aware Manager (SAM) and its XML open interface provides easy integration into OSS environments. This enables service providers to build Web-portal interfaces that allow easy, flexible service provisioning, to quickly address market reactions.



Quarantine Manager receives notification of events triggering security alerts and generating quarantine decisions



Alcatel-Lucent provides advanced, simplified intrusion containment and security for Alcatel-Lucent and multi-vendor networks

The flexibility of Web Services provides a more efficient OSS/BSS-to-network communication, with faster turnaround times, and less overhead and effort.

For example, the OmniVista 2790 Web Services solution can be used as a single, flexible point of access for end-to-end user service configuration for the Alcatel-Lucent OmniPCX IP Telephony and VoIP solution.

In summary, OmniVista 2790 Web Services simplifies the introduction of Alcatel-Lucent Enterprise IP solutions in large complex environments. OmniVista 2790 Web Services reduces cost, time and risk associated with OSS/BSS and process automation. It makes OmniVista 2500 and 2700 plug-and-play in complex, heterogeneous environments. Web Services makes OmniVista 2500 and 2700 Network Management Solutions and its data structure scriptable and accessible to open environments.

Summary

Alcatel-Lucent OmniVista 2500 and 2700 applications deliver the best value in the industry by providing simplified management that creates a secure, reliable network infrastructure. Implementing OmniVista reduces overall administrative costs, and minimizes the maintenance required, which results in an improved return on investment.

OmniVista 2500 and 2700 applications provide better network availability by anticipating potential risks and reacting to important events resulting in less downtime and improved productivity. The northbound interface makes the OmniVista solution easier to integrate into the existing network application framework, simplifying data sharing.

By controlling the access to the network, OmniVista 2500 and 2700 network management applications protect the infrastructure from attacks and security risks while limiting financial exposure. Moreover, simplified management operations coupled with a consistent set of tools across all network devices, minimizes the difficulty of implementing and monitoring the network infrastructure.

Alcatel-Lucent OmniVista 2500 & 2700



Comprehensive, extensive manageability across Alcatel-Lucent equipment and third-party devices

| Features Supported by Device Family | OmniVista 2500 Core Application | | | | | | | | | | OmniVista 2700 Supplemental Applications | | | | | Element Manager | | |
|--|---|--|---------------------|--|----------------------------------|---|---------------------|--------------------------|-------------------|--------|--|------------------|---|------------------------------|---------------------|-------------------------|-----------------------|---------------------|
| | Infrastructure Deployment & Configuration | | | | | Performances Monitoring & Troubleshooting | | | | | Automation of Operations | | Security, Performances Optimization, Northbound Interface | | | | | |
| | Discovery & Topology | Trap Management with "Action on Event" | CLI / Telnet Launch | Web based Element Migr or third party app launch | VLAN provisioning through Wizard | Locator | Device MIB Browsing | Utilization & Statistics | Inventory Reports | Health | Interactive Telnet | Resource Manager | PolicyView 2730 | SecureView SwitchAccess 2750 | SecureView ACL 2760 | Quarantine Manager 2770 | Web Services (2) 2790 | User interface type |
| OmniSwitch AOS series (1) | ● | ● | ● | ● | ● | ● | ● | ● | ● | ● | ● | ● | ● | ● | ● | ● | ● | AWV |
| OmniStack 6200 series | ● | ● | ● | ● | | ● | ● | ● | ● | | | ● | | | | | ● | WBM |
| OmniAccess WLAN series | ● | ● | ● | ● | | | ● | | | | | | | | | | ● | WBM |
| Alcatel-Lucent 7750 Service Router (SR) series & 7450 Ethernet Service Switch (ESS) series | ● | ● | ● | ● | | ● | ● | | | | | | | | | | ● | 5620 SAM |
| 3rd party device w/ SNMP support & MIB-2 compliant | ● | ● | ● | ● | | ● | ● | ● | | | | | | | | | ● | WBM |

(1) Covers Alcatel AOS OmniSwitch 6600, 6800, 7000, 9000 series.

(2) Web Services based Northbound interface API coverage included topology, discovery, notifications, locator functionalities. Web Services required for OmniVista http client support.

AWV Alcatel-Lucent WebView, http-based Element Manager for the next generation AOS-based Alcatel-Lucent OmniSwitch.
It provides advanced capabilities that are easy to use for configuring the OmniSwitch family.

WBM Embedded http-based management system allowing access to devices with a standard Web browser for ease of management.

5620 SAM Alcatel-Lucent 5620 SAM, Client/Server NMS application for advanced device and services configuration for Alcatel-Lucent 7750 SR and 7450 ESS series.

System Requirements for OmniVista 2500 and 2700 Environments

| | OmniVista 2500 & 2700 Multi-user configuration | OmniVista 2500 & 2700 Single-user configuration |
|------------------------------------|---|---|
| Supported Platforms and Minimum OS | <p>Microsoft Windows Server 2003 (server side), Windows XP Pro (client side only)</p> <p>Sun Solaris 10* (server & client side)</p> <p>Red Hat Enterprise Linux ES & Novell SUSE version 10* (server & client side)</p> | <p>Microsoft Windows Server 2003, Windows XP Pro</p> <p>Sun Solaris 10*</p> <p>Red Hat Enterprise Linux ES, Novell SUSE 10*</p> |
| Minimum CPU Speed and Type | <p>For MS Windows & Linux: Pentium 4 with 2 Ghz or better (server side) - Pentium 4 with 1 Ghz or better (client side)</p> <p>For Sun Solaris: UltraSparc 5 processor or higher</p> | <p>For MS Windows & Linux: Pentium 4 with 2 Ghz (or better)</p> <p>For Sun Solaris: UltraSparc 5 processor or higher</p> |
| Minimum RAM Required | <p>2 GB RAM or more (server side) on MS Windows</p> <p>1 GB RAM or more (client side) on MS Windows</p> <p>4 GB RAM or more (server side) on Linux & Solaris 64 bits environments</p> | <p>2 GB RAM or more (MS Windows)</p> <p>4 GB RAM or more (server side) on Linux & Solaris 64 bits environments</p> |
| Minimum Disk Required | <p>Min 5 GB free disk space (server side) - Min 2 GB free disk space (client side)</p> | <p>Min 5 GB free disk space</p> |
| Browsers Supported | <p>Microsoft Internet Explorer 6.0.</p> <p>Mozilla FireFox 2.0</p> | <p>Not supported with OmniVista 2520 Basic Single User</p> |

* Supports 32 & 64 bits environments

Alcatel-Lucent OmniVista 2500 & 2700



Ordering Information

| Application | Part Number | Product description |
|--------------------------------------|-----------------|---|
| OmniVista 2500 Core Applications | OV2520-BSU-R3 | OmniVista 2520 Basic Single-user version |
| | OV2540-BMU-R3 | OmniVista 2540 Basic Multi-user version |
| OmniVista 2700 Optional Applications | OV2730-PVOT-R3 | OmniVista 2730 PolicyView |
| | OV2750-SVSA-R3 | OmniVista 2750 SecureView Switch Access |
| | OV2760-SVACL-R3 | OmniVista 2760 SecureView ACL |
| | OV2770-QM-R3 | OmniVista 2770 Quarantine Manager |
| | OV2790-WS-R3 | OmniVista 2790 Web Services |
| OmniVista 2500 and 2700 CD | OV-NMS-CD-R3 | OmniVista 2500 and 2700 applications CD - Requires individual activation license for each application |

Specific upgrades and software subscription programs are available through service and support which allows customer to stay current between major releases.

Free 60 day evaluation versions for OmniVista 2500 and 2700 are available as well. Please contact your Alcatel-Lucent representative or check the Alcatel-Lucent web site for further details.

www.alcatel-lucent.com

Alcatel-Lucent

26801 West Agoura Road
Calabasas, CA 91301 USA

Contact Center

(800) 995-2612 US/Canada
(818) 880-3500 Outside US

www.alcatel-lucent.com

Alcatel, Lucent, Alcatel-Lucent, and the Alcatel-Lucent logo, are trademarks of Alcatel-Lucent. All other trademarks are the property of their respective owners. Alcatel-Lucent assumes no responsibility for the accuracy of the information presented, which is subject to change without notice. (c) 2007 Alcatel-Lucent. All rights reserved.

P/N 031879-00 3/07